



# MAPLE

BRINGING VISIONS TO REALITY

PASSION.  
EXPERTISE.  
SUCCESS.



OUR CREDENTIALS



# TESTIMONIALS

“From tender to contract, into design and installation at the site, Maple have been one of the easiest subcontractors to deal with.”

// Paul McGeady  
// Project Manager (JCA Engineering)  
// **Kao Data Park**

“The team delivered the project end-to-end, demonstrating a determination to deliver their work to the highest standard.”

// Tom Leach  
// Assistant Project Surveyor (BAM Construction)  
// **Greater Manchester Major Trauma Hospital**

“The project looks amazing, fits the brief perfectly and is finished to a brilliant standard.”

// Rob Douglas  
// Construction Manager (Willmott Dixon)  
// **Horsham Fire Station**



# CONTENTS

ABOUT US	03
PROVEN PROCESS	04
WHY MAPLE?	05
FINANCIAL SNAPSHOT	06
WHO WE WORK WITH	07
SECTORS WE SERVE	08
OUR PRODUCT RANGE	09
// BRISE SOLEIL	10
// LOUVRES	11
// ARCHITECTURAL FAÇADES	12
// RAINSCREEN CLADDING	13
// COMMERCIAL BLINDS	14
FIND OUT MORE	15



“What makes Maple unique is our transparency. We never leave a project until it is complete, and thrive on customer feedback to improve our processes.”

// Sean McGrath  
// Managing Director, Maple



# ABOUT US

**Maple is a leading designer, manufacturer and installer of solar shading, weather protection and screening for building exteriors.**

Since 1983, we've been combining innovation, technical excellence and exceptional customer service to deliver projects that save energy, create visual impact and make buildings more comfortable for their occupants.

We work with leading construction companies on landmark projects, while the UK's top architects trust us to turn their visions into practical, beautiful and award-winning reality.





# 24 // 5 PROVEN PROCESS

Maple's 24/5 Proven Process describes the 24 critical stages and in-depth methodology that support the 5 main building blocks of every successful project, and provide tangible benefits for clients - from inception to completion.

CLIENT BENEFITS

MAPLE PROCESSES

**1 // EARLY COLLABORATION**  
Specification, education and CPD, technical library, façade reviews.

**3 // BID, COSTINGS AND PROPOSALS**  
Costings, programmes, 3D modelling, install methods.

**2 // PRE-CONSTRUCTION SERVICES AND VALUE ENGINEERING**  
Structural reviews, samples, testing and FEA, value engineering.

**4 // PROJECT DELIVERY**  
Delivery execution plan, quality control, health and safety, check lists and programme.

**5 // CLIENT HANDOVER**  
Feedback, manuals, LFE.

**1 RESEARCH**  
Search for projects that align with our capabilities and client criteria.

**2 DEFINE**  
Learn about design intent and objectives. How can Maple add value?

**3 ENGAGE**  
Pre-construction meetings and design support. As NBS authoring partners, help build specification.

**5 BID**  
Cost and define programme and design methodology.

**6 DEVELOP**  
Liaise with project team to finalise façade design.

**7 NEGOTIATE**  
Share detailed drawings and programme with client.

**8 CLOSE**  
Sign contracts. Prepare internal project handover.

**10 DESIGN APPROVAL**  
Complete design principles and send for client approval.

**11 DESIGN CONSTRUCTION**  
Complete drawings and project risk assessment.

**12 DESIGN FABRICATION**  
Approve manufacturing drawings. Complete design checklists.

**14 PROCUREMENT**  
Procurement team review pack, select best purchasing route, and order components and services.

**15 MANUFACTURE**  
Manufacture components. Finish with specified coatings.

**16 ASSEMBLY**  
Assemble components.

**17 QUALITY ASSESSMENT**  
Assess, photograph and label assembled items.

**19 PRE-INSTALL PLAN**  
Complete project logistics, phasing and site installation plans. Seek client approval. Update risk assessment for installation.

**20 SITE SET UP**  
Complete site inductions. Set up equipment, access and office.

**21 INSTALLATION**  
Install in line with building regulations and safe systems of work. Complete weekly site reports and records for QA.

**22 QA AND SIGN OFF**  
Install parts and sign off in line with agreed QA procedure.

**24 PROJECT REVIEW**  
Gather client evaluations. Agree lessons to learn and actions. Provide feedback to all departments. Complete final close-out report.

**4 COMPLIANCE GATEWAY 1 Go / No go point**  
Decide with client if the project should proceed.

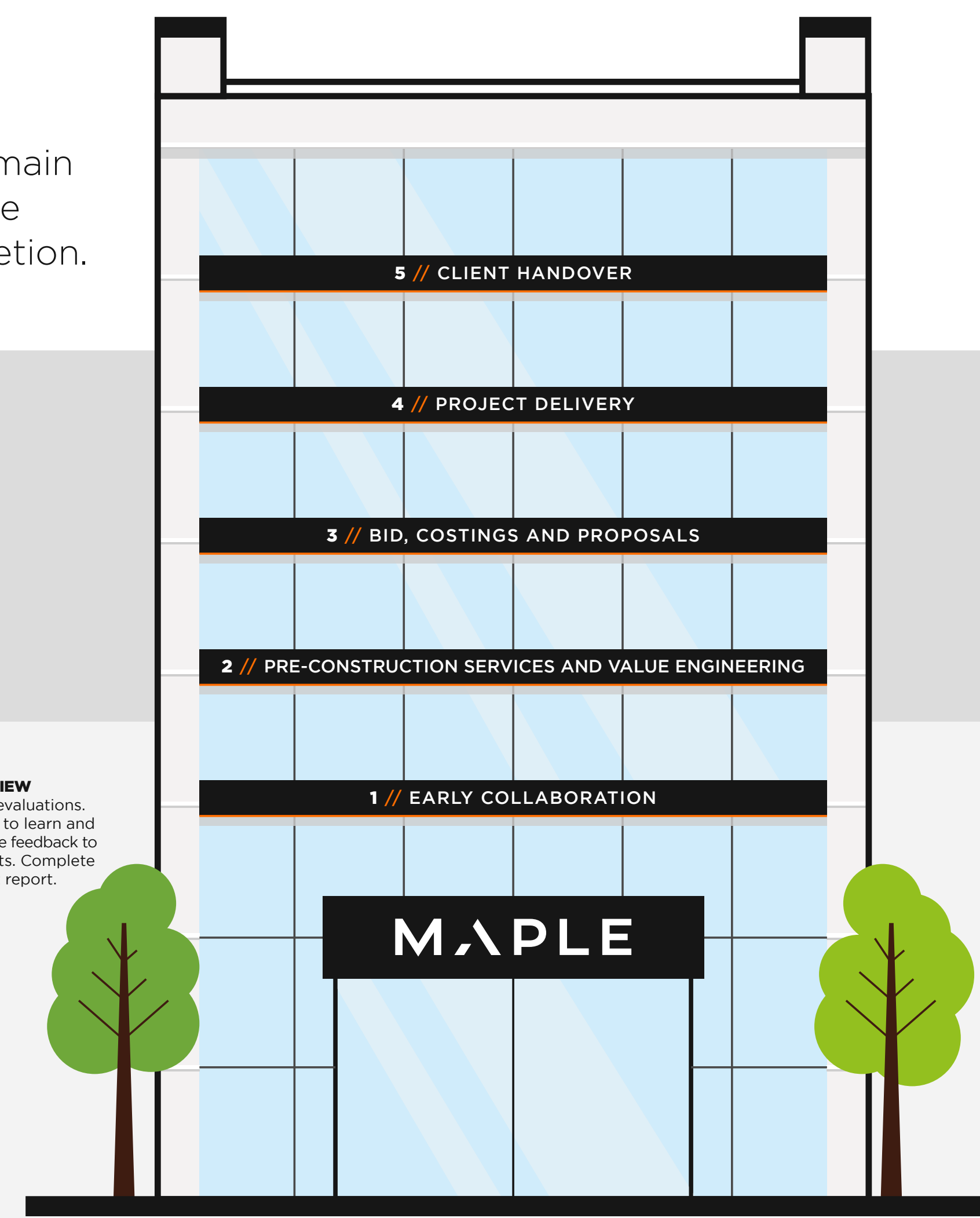
**9 COMPLIANCE GATEWAY 2 Handover**  
Pre-construction stage completed.

**15 COMPLIANCE GATEWAY 3 Design handover**  
Key stakeholders review checklist and fabrication pack.

**18 COMPLIANCE GATEWAY 4 Handover from factory to operations**  
No parts leave our factory until all risks reviewed and checklist complete.

**23 COMPLIANCE GATEWAY 5 Final handover**  
Resolve all snags. Hand over 'as-built' drawings, O&M information and end-to-end reporting. Client signs off project.

**OUR COMPLIANCE GATEWAYS** are milestone assessments that ensure everything is on track and objectives are being met. These quality control measures start at the first point of contact and continue until the project is handed over to the client.



# WHY MAPLE?

**40+**  
YEARS  
TRADING

**£10M**  
PROFESSIONAL  
INDEMNITY

**15,000**  
DESIGN CHECKS EACH YEAR

DIGITAL TOOLS  
IMPLEMENTED  
TO ENSURE  
COMPLIANCE  
WITH BUILDING  
SAFETY ACT

**6.5**  
YEARS  
AVERAGE SERVICE  
(ACROSS 70+ STAFF)

**28%**  
REDUCTION

**5**  
CONSECUTIVE YEARS  
WITH NO RIDDORS  
OR LTIS

**24-STEP PROVEN PROCESS**  
OUTLINES CRITICAL STEPS  
WE TAKE FROM PROJECT  
INCEPTION TO COMPLETION

SCOPE 1 AND  
2 CARBON  
EMISSIONS  
SINCE 2021

**1.1**  
INCIDENT  
FREQUENCY RATE  
(BELOW  
INDUSTRY IFR)

# FINANCIAL SNAPSHOT



POSITIVE STEADY  
CASH BALANCE.



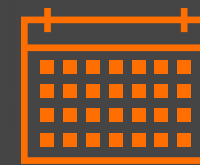
CURRENT RATIO  
IS OVER **2.5**.



**100%** OF STAFF FELT  
THAT MAPLE WAS  
A POSITIVE PLACE  
TO WORK.



NET ASSETS OF  
OVER **£9M**.



AVERAGE LENGTH OF  
SERVICE IS **8 YEARS**.  
(Excluding those who started  
in the last 12 months)



**HIGH** CREDIT  
LIMIT.



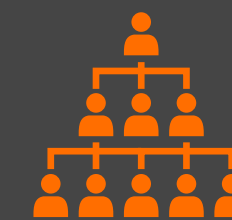
**8%** EMPLOYEE  
TURNOVER RATE.



**100%** OF STAFF FEEL  
THAT OUR BENEFITS  
PACKAGE MEETS OR  
EXCEEDS EXPECTATIONS.



WE PAY ACCORDING  
TO SUPPLIER TERMS  
ON ALL AGREED  
INVOICES.



**96%** OF STAFF  
SAY THEY HAVE  
CONFIDENCE IN THE  
LEADERSHIP TEAM.



STRONG AND  
CONSISTENT  
PROFITABILITY.



NO P.I. CLAIMS  
AGAINST US.



# WHO WE WORK WITH



## Contractors

Our team of in-house pre-construction and design specialists provide a range of services, including desktop simulation and workshops to help work with contractors and gain a better understanding of how to make a project buildable.



## Architects

The key to delivering successful projects is early collaboration with architects, even as early as RIBA stages one and two. With a deep understanding of rainscreen cladding and architectural façades, Maple can provide support and advice to bring visions to reality.



## Client organisations

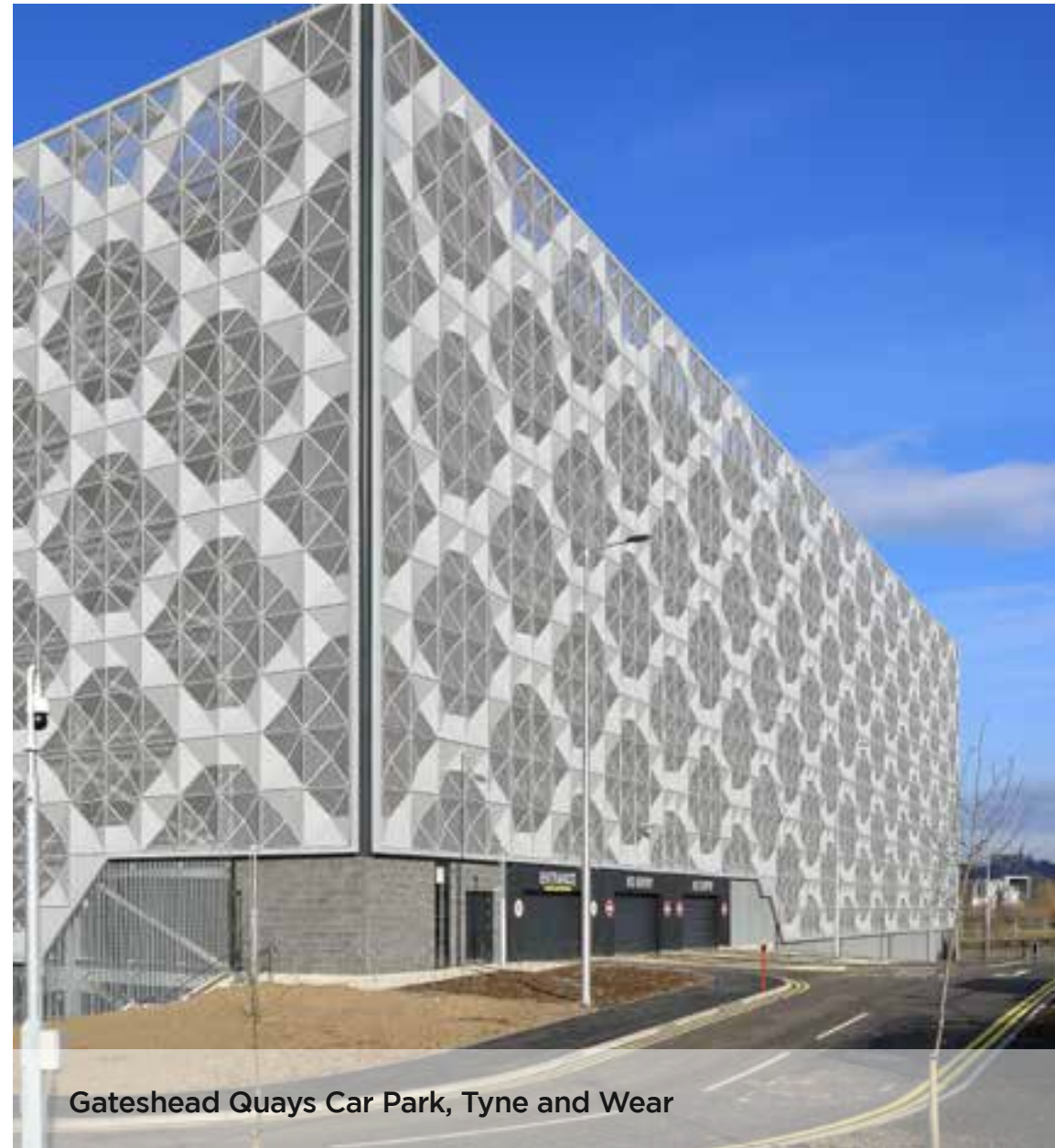
Our architectural façades inspire projects throughout the UK, from airports and commercial properties to schools, universities, car parks, police stations and NHS buildings.



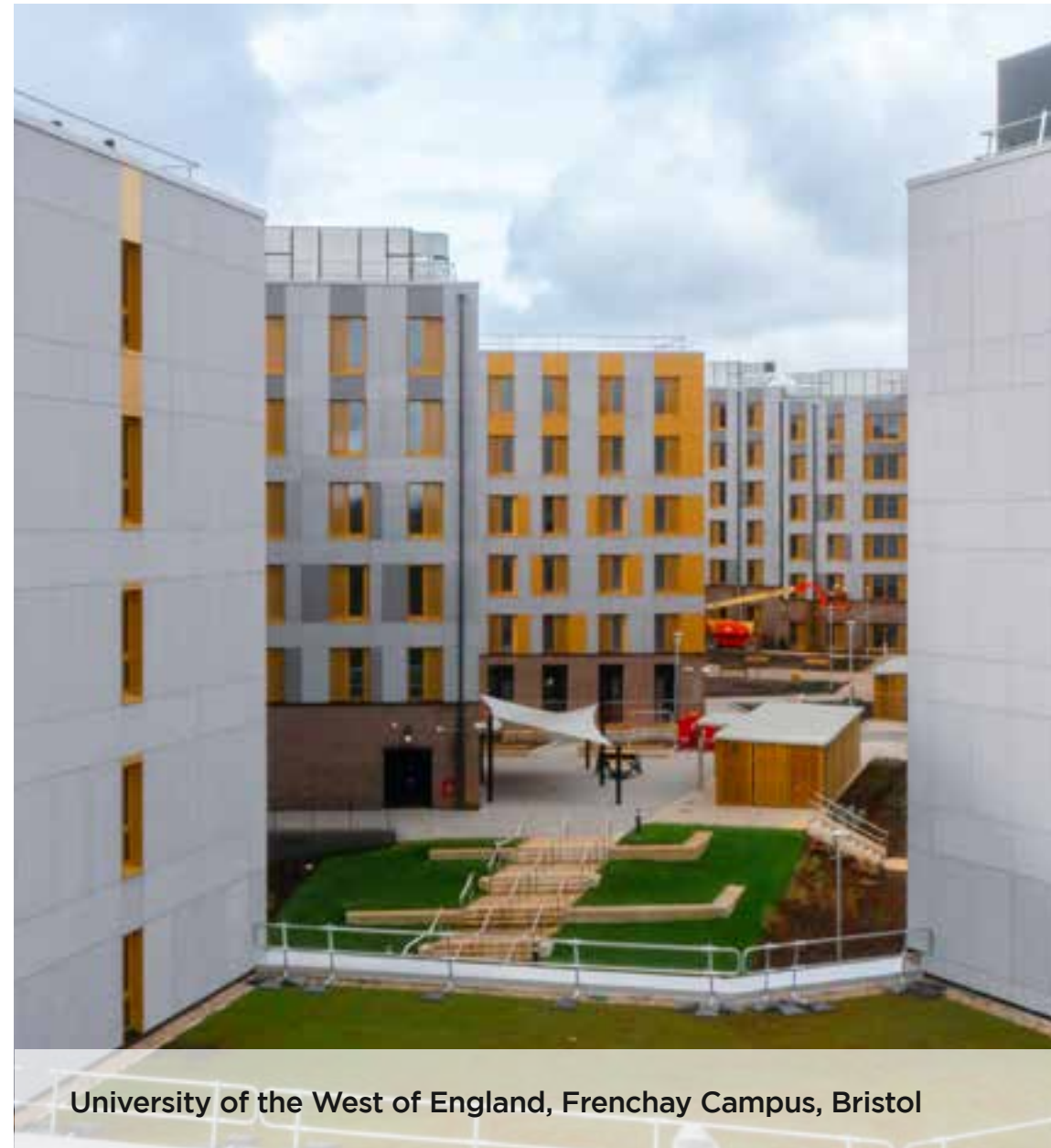


# SECTORS WE SERVE

## Car parks



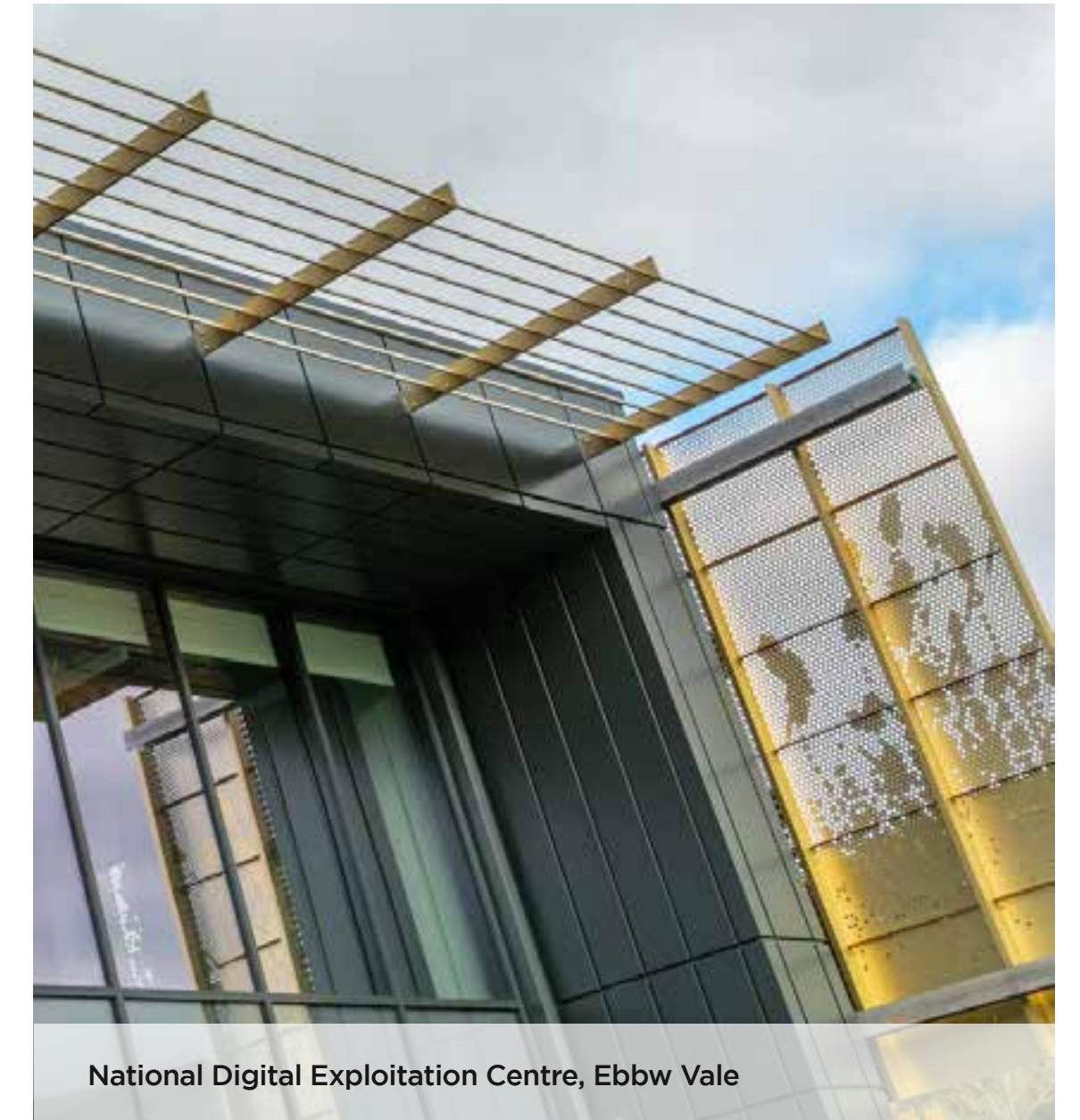
## Student accommodation



## Data centres



## Office, government and retail





# OUR PRODUCT RANGE

In November 1983, we began installing blinds and curtains for commercial clients. Fast forward 40 years, and we are now installing brise soleil, louvres, architectural façades and rainscreens to bring visions to reality for car parks, student accommodation, data centres, and office, government, and retail projects.

**Brise soleil**  
Infiniti® // Skyvane® // Zenith®



**Louvres**  
Contour®



**Architectural façades**  
Continuum® // Nebula® // Infiniti® // Vector®



**Rainscreen cladding**  
Aspect® // eClips®



**Commercial blinds**  
Solaire®





# BRISE SOLEIL

**Visually appealing and functional products designed by Maple to provide effective shading and weather protection for all types of buildings.**

Our range of brise soleil products offers different blades, finishes and materials (including wood and metal) to accommodate different project budgets and design specifications.



## **Infiniti® vertical brise soleil**

Continuous, hidden-fix solar shading solution for all building types, particularly where low-level sun affects the comfort of occupants.



## **Skyvane® horizontal brise soleil**

Brise soleil cassette system for effective protection against year-round sun and hot summer temperatures.



## **Zenith® horizontal brise soleil**

Lightweight and budget Z-blades engineered for a slimline look, with modular cassette system for quick and efficient installation.



Northamptonshire Police HQ, Kettering  
Brise soleil // 2018



# LOUVRES

**Maple's ventilation and screening systems are designed to allow the passage of air while protecting against the elements.**

Our range of screening and ventilation façades feature advanced engineering to provide lightweight but effective protection from dirt, pollution and weather.



## **Contour® VL ventilation louvre**

Modular and efficient to install rectangular-profile louvre where natural ventilation is required in plant and HVAC machinery rooms.



## **Contour® PL screening louvre free-standing**

A simple façade system designed with minimal components. Basic and functional, it hides unsightly HVAC machinery, equipment, pipes and ducting.



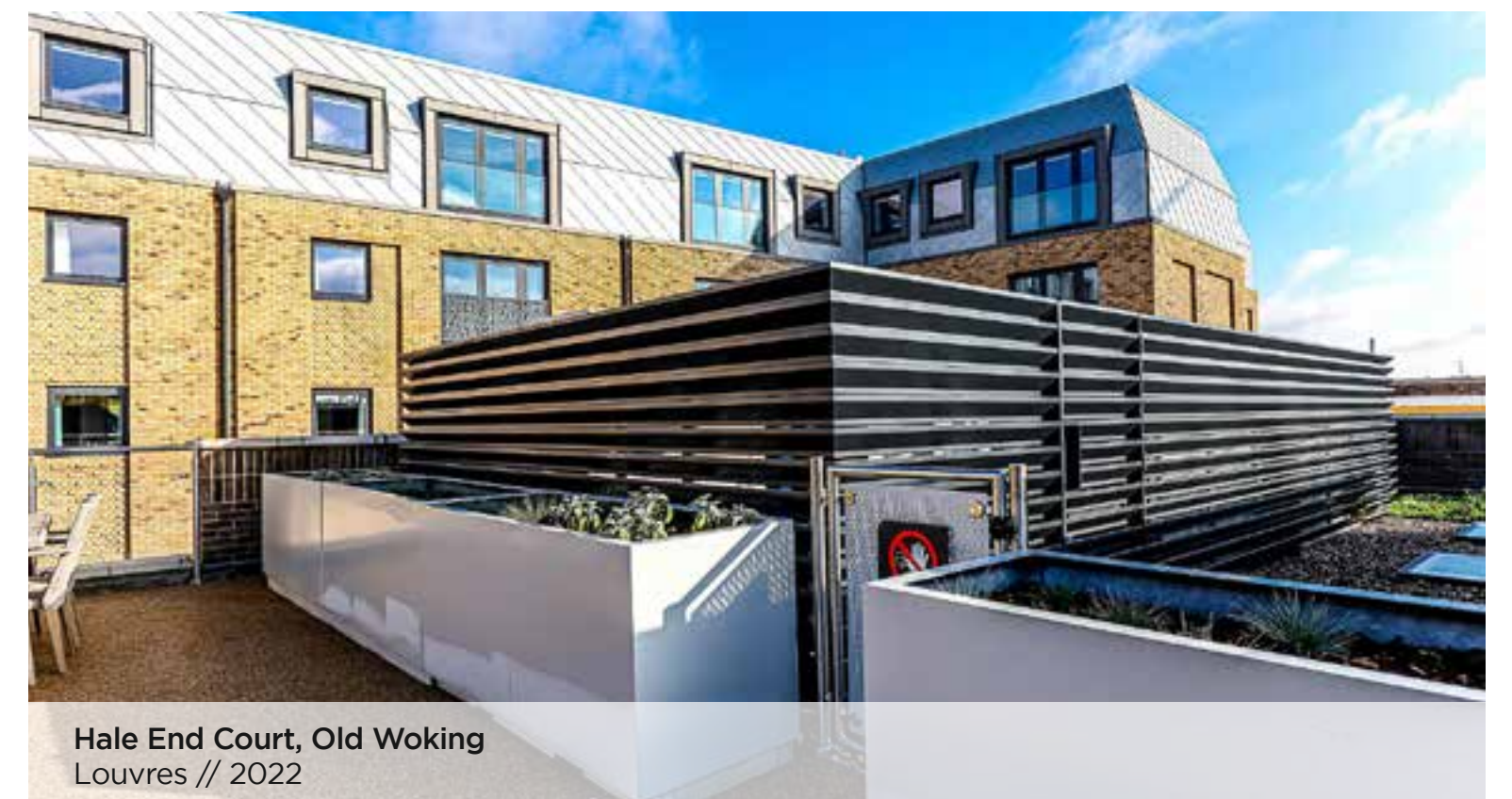
## **Contour® HP weather louvre**

Weather louvre system with a patented aerodynamic blade profile that can be easily converted from single-bank to double-bank to deliver Class A performance.



## **Contour® SL screening louvre**

An advanced rooftop plant screening solution with a mullion design for long louvre spans. A highly versatile Maple system with different louvre, flashing, corner type and mullion design options.



Hale End Court, Old Woking  
Louvres // 2022



# ARCHITECTURAL FAÇADES

**Maple's decorative façade systems are performance-tested and enhance the aesthetic of building design.**

Our architectural façades are available with solid, mesh or fabric panels, and are used to create stunning architectural effects.



## **Continuum® panel façade system**

Continuum is designed to accommodate tolerances and live loads common to multi-storey car parks, while giving architects versatility in design to bring visions to reality.



## **Nebula® expanded mesh façade**

Cost-effective architectural façade and screening solution suited to multi-storey car parks, where natural ventilation and free area requirements are critical.



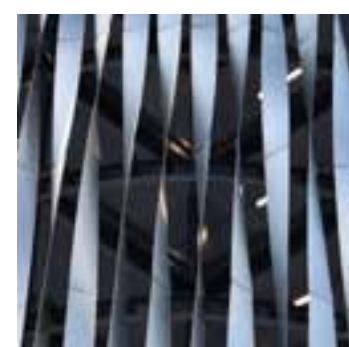
## **Vector® fin façade**

Feature-fin system with numerous design possibilities for all building types, with modular 'cassette' installation approach for smaller blades.



## **Infiniti® vertical fin façade**

Continuous, hidden-fix architectural fin façade solution for all building types, particularly where a continuous design must be achieved.



## **Vector® fin façade**

Decorative architectural façade system, precision-engineered for bespoke designs, incorporates 'spring-loaded' brackets to counter natural building movement.



Greater Manchester Major Trauma Hospital, Salford  
Architectural façade // 2023



# RAINSCREEN CLADDING

**Our class-leading rainscreen cladding system is designed for strength, performance and installation efficiency.**

As well as meeting BS8414:2 2020 standards, the system design has been tested for strength and undergone finite element analysis to offer superior performance.



**Aspect<sup>®</sup>  
CTH**

Horizontal rainscreen façade system commonly used for steel frame systems (SFS), where there is likely to be more tolerance in setting out the sub-frame.



**Aspect<sup>®</sup>  
CTV**

Vertical rainscreen façade system typically suited for concrete stair cores/flat surface areas and portrait panels using hook-on system for fast installation.



**eClips<sup>®</sup>  
HL**

Horizontal and vertical rainscreen support system with patented insulation-fix technology improves thermal performance of the building envelope.



**eClips<sup>®</sup>  
VL**

Vertical rainscreen support system with patented insulation-fix technology and stainless-steel bracket improves thermal performance of the building envelope.



**Signature at Highgate, London**  
Rainscreen cladding // 2024



# COMMERCIAL BLINDS

**Our range of interior solar shading products is designed for commercial use. Maple's blind and curtain range includes commercial-quality roller and venetian options.**

For more specialised requirements, we also provide automated window blind systems and personalised fabric options to match corporate brand themes.



**Solaire®  
roller  
blinds**

Our blinds combine effective solar shading performance with visual comfort to block out sun glare.



**Solaire®  
rooflight**

The Maple Ultra rooflight blind system is a durable, highly versatile, electrically operated system for commercial use.



**Commercial  
curtains**

An effective range of fabrics and designs can be used for privacy, acoustic, blackout and infection control.



**Solaire®  
vertical  
blinds**

Our Solaire vertical system is ideal for large commercial projects and is available in a range of fabrics, control options (for example, chain or wand) and louvre sizes.



**Solaire®  
venetian  
blinds**

Maple's Ultra venetian range is available in more than 80 colours. The range comes in fabric, wood and aluminium, and has solar tracking, motorised and blackout options.



**Greenbank Student Village, University of Liverpool**  
Commercial blinds // 2019



# MAPLE

FIND OUT MORE

T: 0161 456 6644

E: [sales@maplefacades.co.uk](mailto:sales@maplefacades.co.uk)

W: [maplefacades.co.uk](http://maplefacades.co.uk)

**Maple Façades\***

Bramhall Moor Technology Park

Pepper Road, Hazel Grove

Stockport

SK7 5SA



**OUR CREDENTIALS**

\*Maple Sunscreening Ltd is trading as Maple Façades