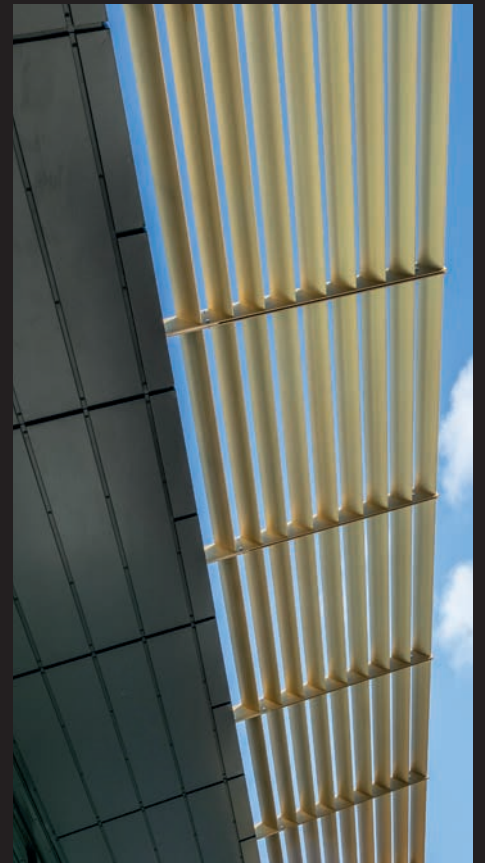
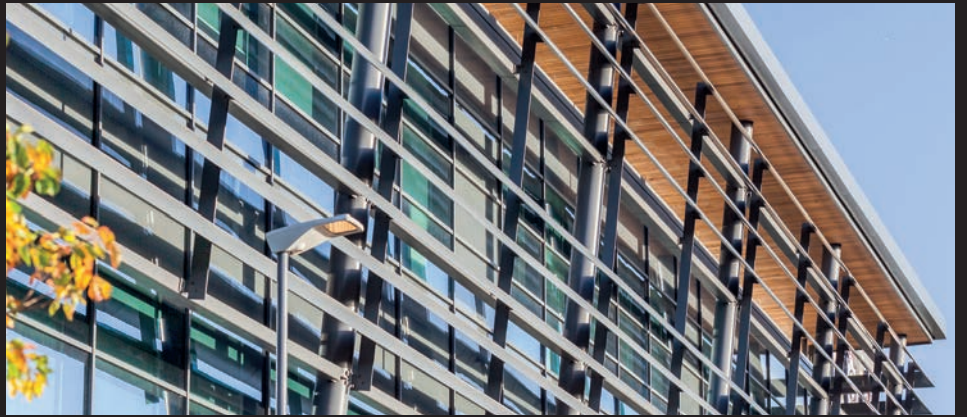


MAPLE

# BRISE SOLEIL

Vertical or horizontal blades and fins



# CONTENTS

Introduction	01
Types of brise soleil	02
Skyvane®	04
Infiniti®	06
Zenith®	08
Vector®	10
Why Maple?	12

# BRISE SOLEIL – FROM VISION TO REALITY

Brise soleil systems have become increasingly important features of modern architecture and offer aesthetic appeal and practical advantages. Vertical or horizontal blades and fins provide effective solar shading, enhancing the energy efficiency of buildings and reducing glare, while contributing striking visual elements to the overall design.

Since 2003, Maple Façades have become recognised leaders in the design, manufacture and installation of brise soleil systems, providing a wide array of options tailored to meet diverse project requirements. Our meticulous Proven Process ensures that every design vision is preserved from the beginning, with our dedicated pre-construction team working to bring concepts to life.



Images:  
1. The Copse student accommodation, University of Essex, Colchester  
2. National Digital Exploitation Centre, Ebbw Vale  
3. National Digital Exploitation Centre, Ebbw Vale  
4. Farnborough International Exhibition & Conference Centre  
5. Bradford Academy  
6. Percy Gee Building, University of Leicester

# TYPES OF BRISE SOLEIL

Aluminium brise soleil systems in multiple configurations – combined with more than 20 years of experience – produce infinite design possibilities.

## Skyvane®

As a projecting brise soleil system, Skyvane® offers optimal solar shading with aerofoil or rectangular profiles to ensure occupant comfort and align with architectural visions.



## Infiniti®

Infiniti® brise soleil offers a hidden-fix solution that's ideal for all building types, especially where seamless design and protection against low-level sun is crucial.



## Vector®

Vector® is a decorative brise soleil system providing various design options for architects and specifiers. Aerofoil and rectangular blades can be installed vertically or horizontally to meet performance needs.



## Zenith®

Zenith® brise soleil uses lightweight 75mm x 75mm Z-profiled blades for effective year-round sun blocking, making it a cost-effective option where installation speed is crucial.



Images:  
1. National Digital Exploitation Centre, Ebbw Vale  
2. VW Brentford

3. ALDI, Bedford  
4. Acklam Grange School, Middlesbrough



Skyvane® is a horizontally projecting brise soleil system designed for protection against hot summer temperatures and solar glare to ensure occupant comfort.

Available in aerofoil or rectangular profiles, Skyvane® aligns with architectural visions and features the option for modular construction to enable efficient installation. Aluminium blades, positioned to protect against the sun at its highest point, can be powder-coated or anodised to match specific colours, including woodgrain powder-coating to mimic natural timber.



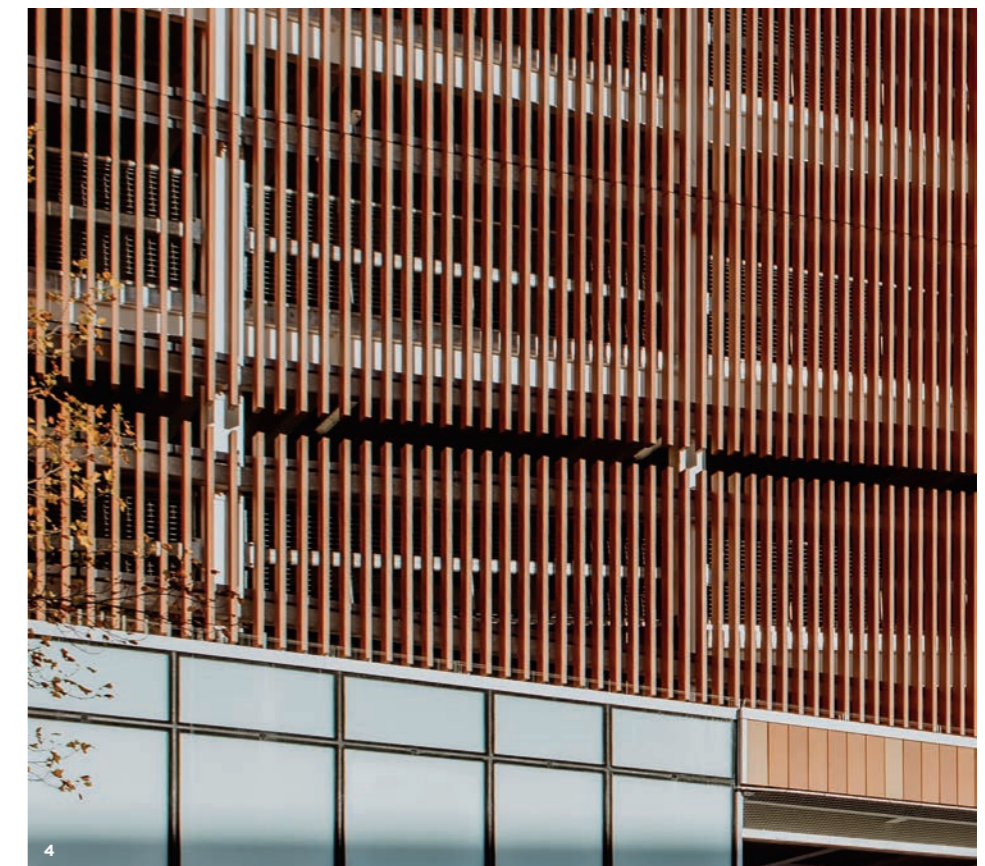
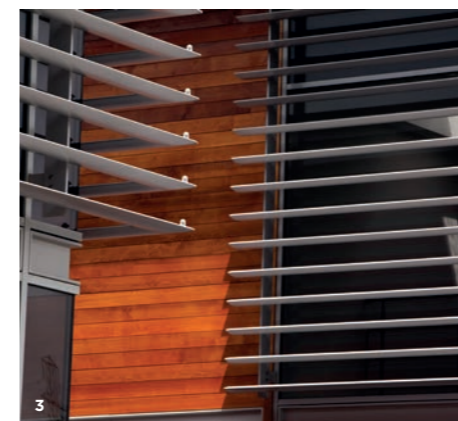
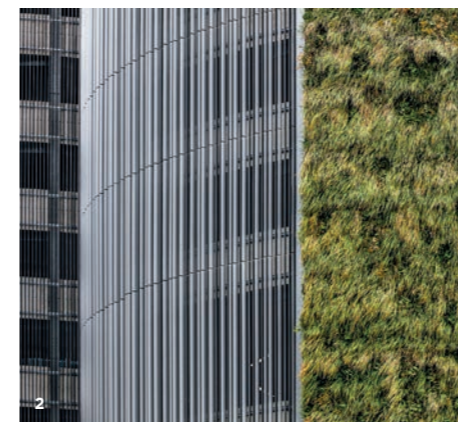
SPECIFICATION

Blade construction	Aerofoil or rectangular profile blades, aluminium 6063 T6.
Blade colour (finish)	Polyester powder-coated to 60µm or anodised to 25µm.
Spans	Maximum spans vary with wind-load and building design.
Sidearms	Aluminium 6082 T6/Aluminium 5083 H111 T6. Polyester-powder coated 60µm/Anodised 25µm.
Bracket construction	Galvanised mild steel (S275 or similar) or TRINITI curtain wall bracket (Aluminium 6063 T6).
Pitch	0°, 45°, 90°.

Maple Façades are NBS Chorus specification writing partners

Infiniti® is a continuous, hidden-fix brise soleil solution for all building types, particularly occupied public buildings. The system offers a wide range of design possibilities for vertical or horizontal layouts, with minimal fixings to help meet budget requirements.

Infiniti® uses hidden-fix technology to create a 'continuous' visual effect, enhancing the overall aesthetic. Bespoke design options are available, including aerofoil, rectangular and 'teardrop' blades, allowing for tailored solutions. The patented, unique design features a two-part fin system with an integral stainless steel locking plate to ensure functionality and security.



## SPECIFICATION

Blade construction	Aerofoil, rectangular or bespoke, aluminium 6063 T6.
Blade colour (finish)	Polyester powder-coated to 60µm or anodised to 25µm.
Spans	Maximum spans vary with wind load and building design.
Vertical and horizontal mullion support	Aluminium 6063 T6. Polyester powder-coated (60µm) or anodised (25µm). Colour to match blades.
Bracket construction	Galvanised mild steel (S275 or similar) or TRINITI curtain wall bracket (aluminium 6063 T6).
System accessories	Cast stainless steel clips for desired blade pitch. End caps to match profile and finish of the blade.

Maple Façades are NBS Chorus specification writing partners

Images:  
1. Kao Park Data Centre, Harlow  
2. Victoria Square Car Park, Woking

3. Wales Audit Office, Swansea  
4. Broadmarsh Bus Station and Car Park, Nottingham

Vector® is a versatile brise soleil system featuring aerofoil or rectangular profiles and is suitable for all building types.

It can be installed vertically or horizontally in cassette panels or as solo construction for larger blades. Multiple design options allow fins to be angled to control natural light and create visual effects, while comprehensive fixing options enable installation on concrete, curtain-walling, brick and steelwork.



SPECIFICATION

Blade construction	Aerofoil or rectangular, aluminium 6063 T6.
Blade colour (finish)	Polyester powder-coated to 60µm or anodised to 25µm.
Spans	Maximum spans vary with wind load and building design.
Vertical and horizontal mullion support	Aluminium 6063 T6. Polyester powder-coated (60µm) or anodised (25µm). Colour to match blades.
Bracket construction	Galvanised mild steel (S275 or similar) or TRINITI curtain wall bracket (aluminium 6063 T6).
End caps	Aluminium 5083 H111.

Maple Façades are NBS Chorus specification writing partners

Zenith® features lightweight, budget-friendly Z-profile blades engineered for a sleek, slimline appearance. With 75mm x 75mm horizontal blades, Zenith® provides effective year-round sun shading while its modular cassette design allows for quick and efficient installation – ideal for projects where speed and cost-efficiency are key.

The system offers optimal sun protection when the sun is at its highest and hottest point. Its aluminium blades can be powder-coated to replicate natural timber. Concealed fixings with support structures and sidearms add to the clean aesthetic, while accommodating various span widths.



SPECIFICATION

Blade construction	Solid section 'Z' blades.
Blade colour (finish)	Polyester powder-coated to 60µm or anodised to 25µm.
Spans	Maximum spans vary with wind-load and building design.
Sidearms	Aluminium 6063 T6. Polyester powder-coated 60µm or anodised 25µm.
Bracket construction	Galvanised mild steel (S275 or similar) or TRINITI curtain wall bracket (aluminium 6063 T6).
Pitch	45°.

Maple Façades are NBS Chorus specification writing partners

# WHY MAPLE?

## PASSION

We care about your project as much as you do and will never leave a project until it is completed. We thrive on all customer feedback and are continuously striving for better solutions.



## SUCCESS

We ensure that your project's design intent is protected through early collaboration and our Proven Process helps to keep your project on track.

Maple are experts in aluminium brise soleil and have been helping contractors, architects and client organisations across the UK deliver challenging projects for the last four decades. We thrive on bringing visions to reality through a combination of design logic, technical know-how and thoughtful planning with superior products and exceptional service.



## EXPERTISE

We're experts in the end-to-end process of an aluminium brise soleil project from concept to completion.



THE  
MAPLE  
WAY®  
PROVEN  
PROCESS



## PROVEN PROCESS

Maple's Proven Process describes the 24 critical stages and in-depth methodology that support the five main building blocks of every successful project, and provide tangible benefits for clients - from inception to completion.



# MAPLE

Maple is a leading designer, manufacturer and installer of rainscreen cladding, solar shading, weather protection and screening for building exteriors and interiors. Since 1983, we've been combining innovation, technical excellence and exceptional customer service to deliver projects that save energy, create visual impact and make buildings more comfortable for their occupants.



## **Maple Façades**

Bramhall Moor Technology Park, Pepper Road, Hazel Grove, SK7 5SA

Call: **0161 456 6644**

Email: **[sales@maplefacades.co.uk](mailto:sales@maplefacades.co.uk)**

Visit: **[maplefacades.co.uk](http://maplefacades.co.uk)**

 [/maplefacades](https://www.linkedin.com/company/maplefacades)