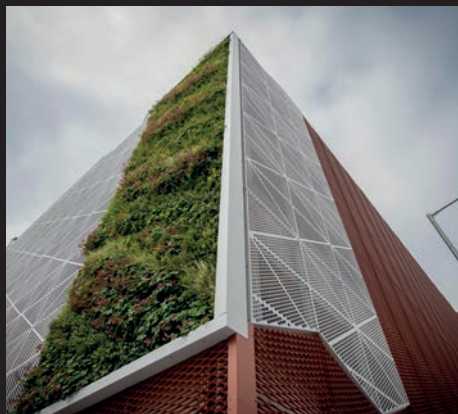
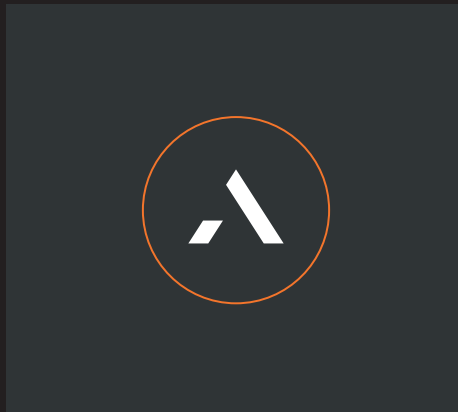


MAPLE

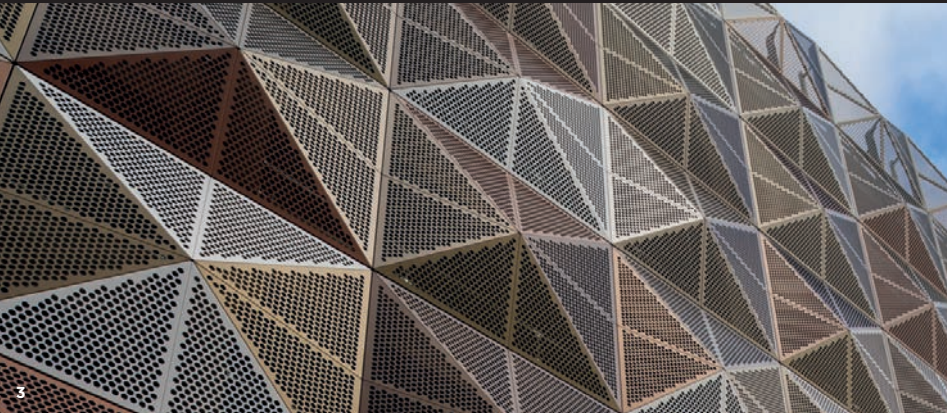
ARCHITECTURAL FAÇADES

Architectural panels, vertical fins and expanded mesh



CONTENTS

Introduction	01
Types of architectural façade	02
Continuum®	04
Infiniti®	06
Nebula®	08
Vector®	10
Case studies	12
Why Maple?	14

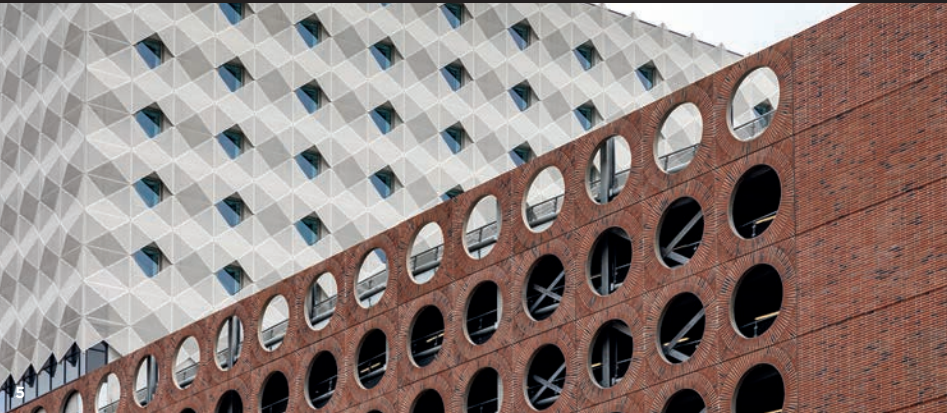


ARCHITECTURAL FAÇADES – FROM VISION TO REALITY

Architectural façades have become an increasingly important feature of modern architecture thanks to their ability to provide visual appeal and practical benefits. Depending on their design, façades can improve energy efficiency, reduce noise and light pollution, and allow fresh air to circulate – all while delivering striking visual impact.

Over the last couple of decades, Maple Façades have consolidated as industry leaders in the design, manufacture and installation of a wide range of architectural façade systems. Our expertise spans numerous options, including decorative panels, fins and blades – each with unique qualities and specifications. Our methodical

Proven Process ensures that your design intent is protected from Day One, while our dedicated pre-construction team help transform your bespoke visions into buildable reality. Our portfolio showcases some of our most challenging and eye-catching projects, demonstrating the limitless possibilities in façade design.



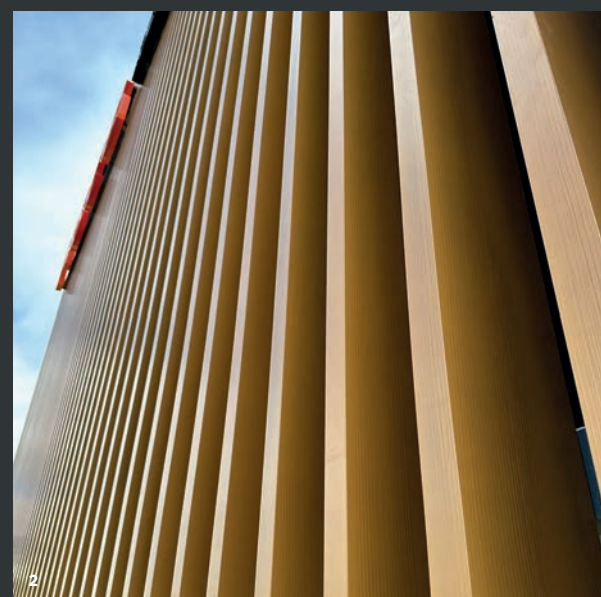
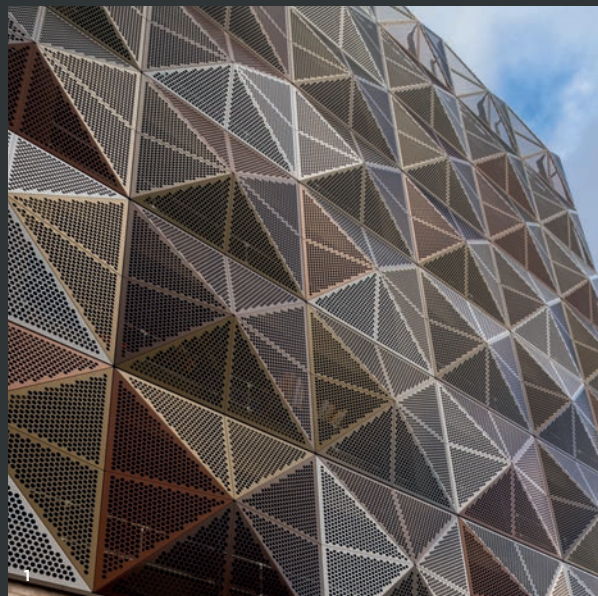
Images:
1. Kao Park Data Centre, Harlow
2. Gateshead Quays Car Park, Tyne and Wear
3. Brentford Car Park

4. Stockport Exchange Tenant Car Park
5. Premier Inn, Circle Square, Manchester
6. National Digital Exploitation Centre, Ebbw Vale

TYPES OF ARCHITECTURAL FAÇADE

Continuum®

Our Continuum® range comprises solid and laser-cut panels, and is designed to accommodate tolerances and live loads common to multi-storey car parks, while giving architects versatility in design to bring their visions to reality.



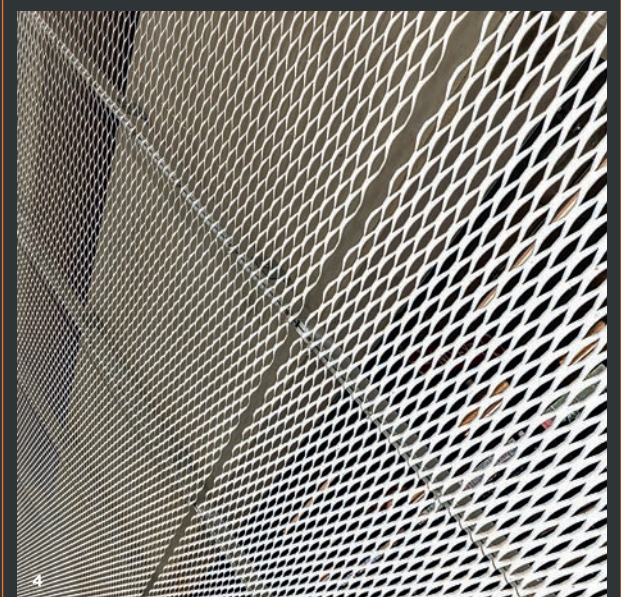
Infiniti®

Our Infiniti® architectural fin façade offers a hidden-fix solution that's ideal for all building types, especially where seamless design is crucial.

Solid and perforated panels, architectural mesh, twisted fins and vertical blades – combined with the expertise of aluminium façade specialists – produce infinite design possibilities.

Vector®

Vector® is a decorative architectural façade system with aerofoil or rectangular profiles. It offers many design options for all building types, including 'twisted' variations that incorporate spring-loaded brackets.



Nebula®

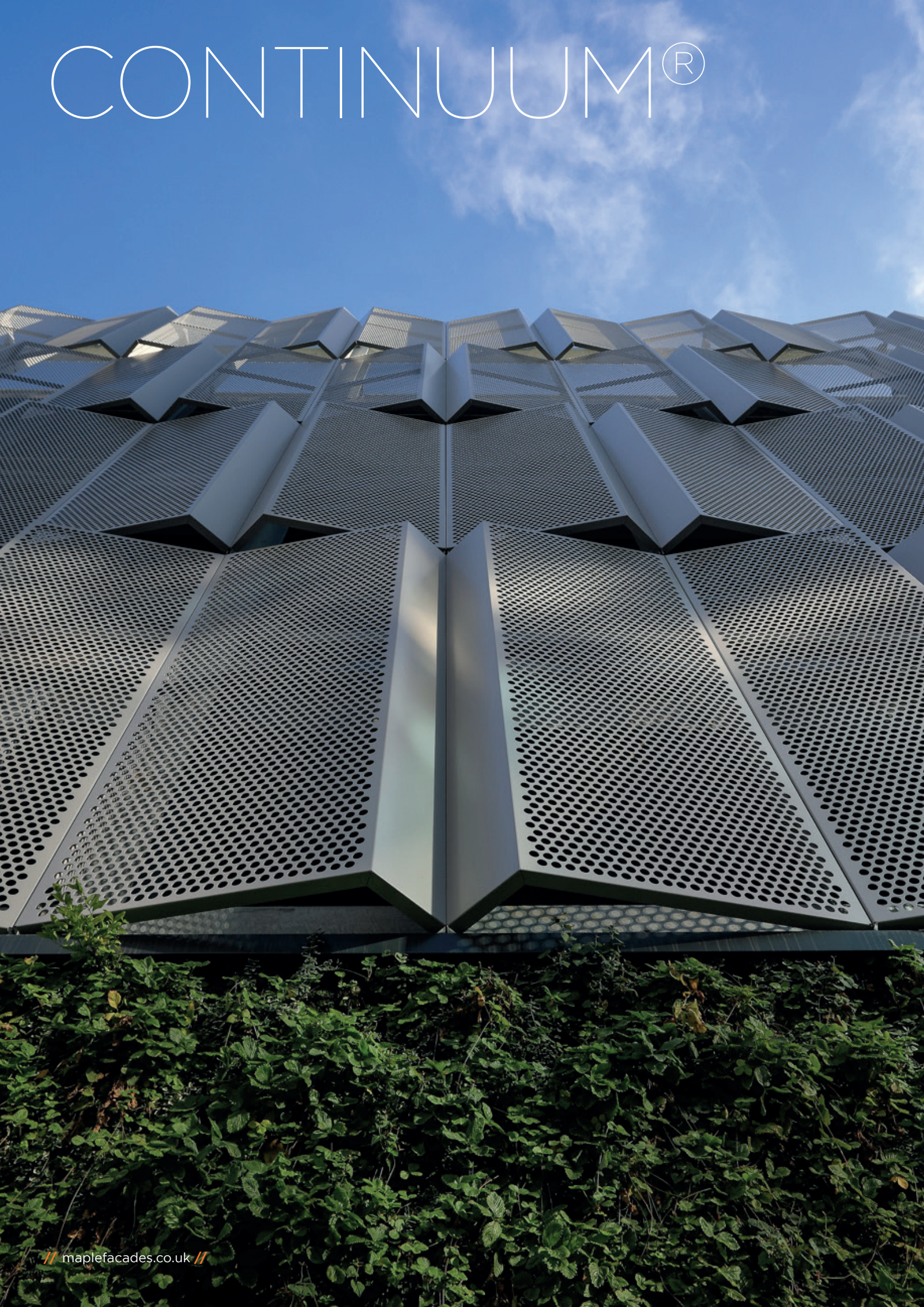
Nebula® is a cost-effective architectural façade and screening solution suited to multi-storey car parks, where natural ventilation and free-area requirements are crucial.



Images:
1. Brentford Car Park
2. Stafford College Skills and Innovation Centre

3. Grindley Hill Car Park, Stoke-on-Trent
4. Northgate End Car Park, Bishop's Stortford

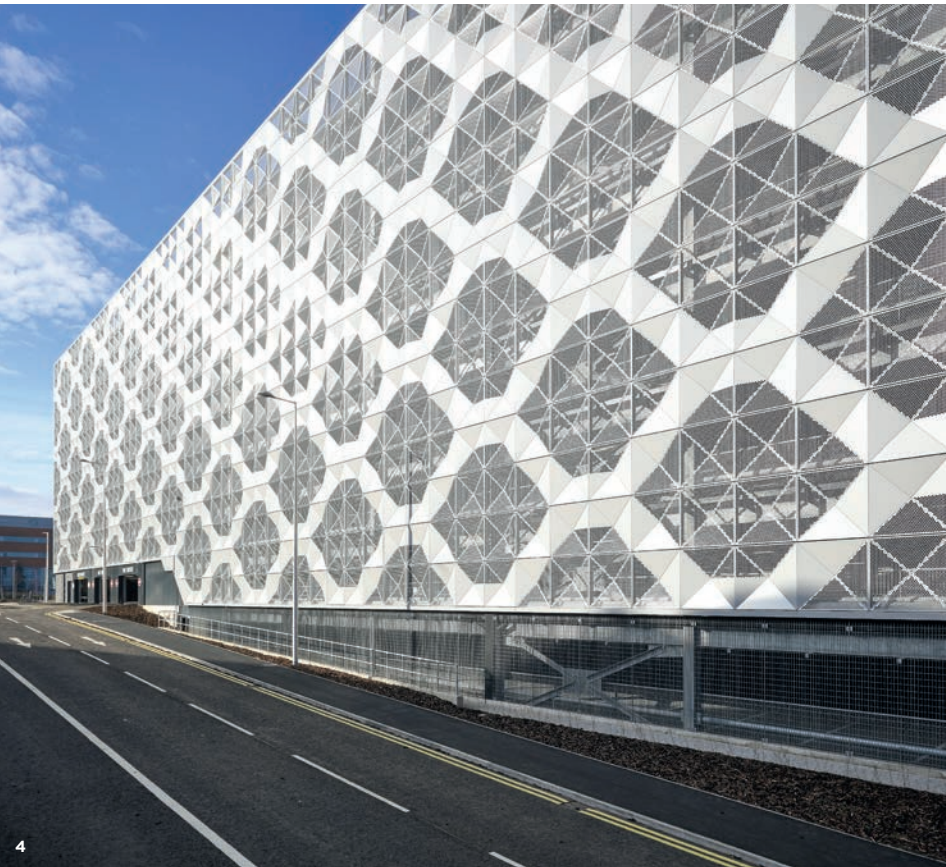
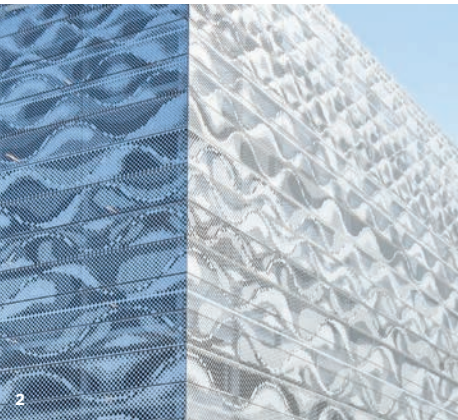
CONTINUUM[®]



Continuum[®] is designed to accommodate tolerances and live loads common to multi-storey car parks, and has featured in numerous award-winning car park projects across the UK.

With a unique substructure that hides fixings without compromising structural integrity, it provides a seamless finish for all façade types, while the hook-on panel system allows for fast and efficient installation. Solid, perforated and laser-cut panels can be configured into different shapes and sizes, offering architects endless design possibilities. The design also incorporates movement joints (both horizontal and vertical) to accommodate natural movement and thermal expansion, particularly in car parks. The secure design

is engineered for strength, and is capable of accommodating panels up to 3m high and 1.4m wide. Continuum[®] has undergone rigorous testing at VINCI Technology Centre UK to meet CWCT-approved standards. It has been proven to withstand wind loads of up to 2.4 kPa on a 50% perforated system under normal conditions, and up to 3.4 kPa under extreme conditions. It also passed with minimal to no risk in all aspects of testing, in line with CWCT impact testing standards.



SPECIFICATION

Panel construction	Aluminium, stainless steel or Cor-ten. Grade and thickness dependant on project location and wind loadings. Panels have nominal 50mm returns to form tray.
Panel colour (finish)	Polyester powder-coated to 60µm or anodised to 25µm.
Panel stiffeners	To suit project requirements and wind loads.
Vertical support construction	Aluminium 6063 T6, polyester powder-coated (60µm) or anodised (25µm). Colour to match panels.
Bracket construction	Mild steel S275 (or similar), hot-dip galvanised or polyester powder-coated (60µm).
Hole size	Min. ø30mm at 40mm triangular pitch.
System accessories	Security fencing/safety wires, as required.

Maple Façades are NBS Chorus specification writing partners

Images:
1. Stockport Exchange Tenant Car Park
2. Farringdon Row Car Park, Sunderland

3. North Manchester General Hospital Car Park
4. Gateshead Quays Car Park, Tyne and Wear

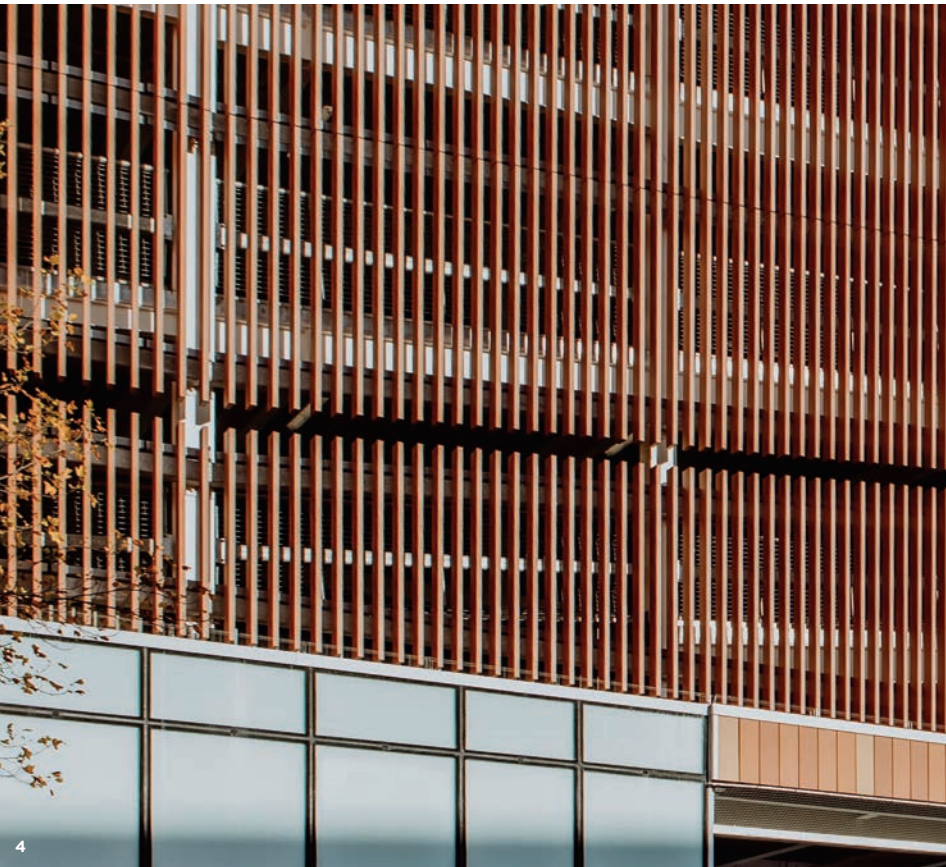
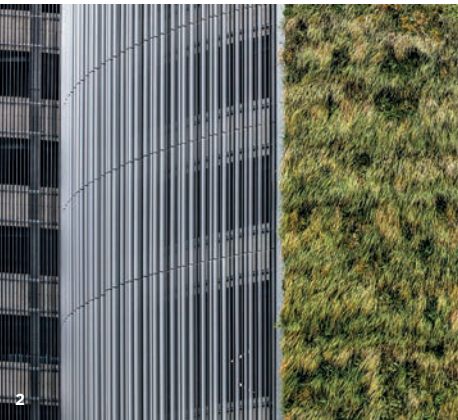


INFINITI®

Infiniti® is a continuous, hidden-fix architectural fin façade solution for all building types, particularly where a seamless design must be achieved.

The system offers a wide range of design possibilities for vertical or horizontal layouts, with minimal fixings to help meet budget requirements. Infiniti® uses hidden-fix technology to create a ‘continuous’ visual effect, enhancing the overall aesthetic. Bespoke design options are available, including aerofoil, rectangular and ‘teardrop’ blades, allowing for tailored

solutions. The patented, unique design features a two-part fin system with an integral stainless steel locking plate, ensuring functionality and security.



SPECIFICATION

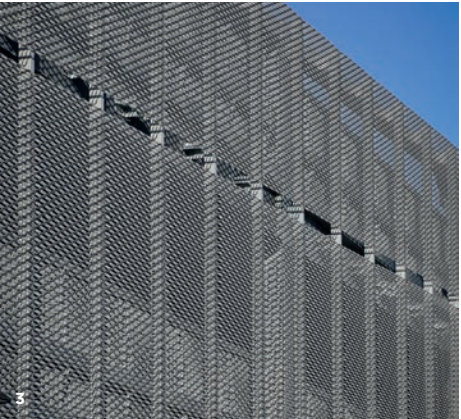
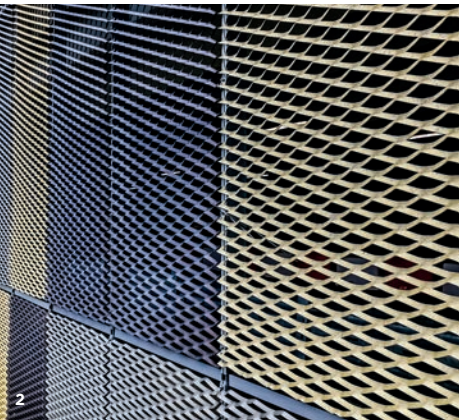
Fin profile	Aerofoil, rectangular and bespoke.
Fin construction	Aluminium 6063 T6.
Fin colour (finish)	Polyester powder-coated to 60µm or anodised to 25µm.
Spans	Maximum spans vary with wind load and building design.
Vertical and horizontal mullion support	Aluminium 6063 T6, polyester powder-coated (60µm) or anodised (25µm). Colour to match panels.
Bracket construction	Galvanised mild steel (S275 or similar) or TRINITI curtain wall bracket (Aluminium 6063 T6).
System accessories	Cast stainless steel clips for desired blade pitch. End caps to match profile and finish of the blade.

Maple Façades are NBS Chorus specification writing partners

Nebula® is a cost-effective architectural façade and screening solution suited to multi-storey car parks where natural ventilation and free area requirements are critical.

Nebula® architectural mesh is designed to be flexible and versatile, incorporating a vertical or horizontal pattern. Expanded mesh offers remarkable versatility with a diverse array of patterns and eyelet sizes. The lightweight panels present an excellent alternative to heavier perforated panels, while the expanded mesh production process minimises wastage

compared to traditional laser-cutting or punching methods. Additionally, the open mesh structure provides natural ventilation, meeting maximum airflow and free-area percentage requirements effectively.



SPECIFICATION

Panel construction	Aluminium 1050 expanded metal mesh, pattern to suit bespoke requirements.
Panel colour (finish)	Polyester powder-coated to 60µm or anodised to 25µm.
Vertical support construction	Aluminium 6063 T6, polyester powder-coated (60µm) or anodised (25µm). Colour to match panels.
Bracket construction	Mild steel S275 (or similar), hot-dip galvanised or polyester powder-coated (60µm).
Tolerance	Dependent on mesh pattern, sheet size and format.
System accessories	Safety flashings installed at ground level.

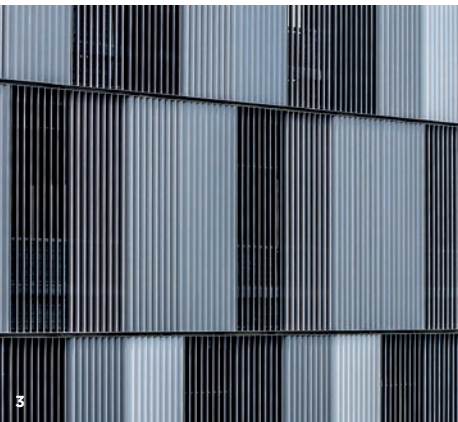
Maple Façades are NBS Chorus specification writing partners



Vector® is a decorative architectural façade system with aerofoil or rectangular profiles, which offers many design options for all building types, including ‘twisted’ variations that incorporate spring-loaded brackets.

The system can be specified as a vertical or horizontal system in cassette panels or solo construction for larger blades. It offers an effective screening solution by using vertical and horizontal fins to conceal the steel framework and create striking façades, especially for data centres. The design allows fins to be positioned at various angles to control natural light and enhance visual effects.

Vector® twisted fin façade:
For bespoke projects with complex design requirements, Vector® twisted fins are the perfect solution. Spring-loaded brackets place the fins under tension to accommodate the live loads common to multi-storey car parks, enabling practical and aesthetically pleasing façades.



SPECIFICATION

Fin profile	Aerofoil, rectangular and bespoke.
Fin construction	Aluminium 6063 T6.
Fin colour (finish)	Polyester powder-coated to 60µm or anodised to 25µm.
Spans	Maximum spans vary with wind load and building design.
Vertical and horizontal mullion support	Aluminium 6063 T6, polyester powder-coated (60µm) or anodised (25µm). Colour to match panels.
End caps	Aluminium 5083 H111.
Bracket construction	Galvanised mild steel (S275 or similar) or TRINITI curtain wall bracket (Aluminium 6063 T6).
System accessories	Security mesh/bird mesh behind fins.

Maple Façades are NBS Chorus specification writing partners

Images:
1. Grindley Hill Car Park, Stoke-on-Trent
2. Victoria Gate Car Park, Leeds

3. Victoria Square Car Park, Woking
4. James Potter Building, Salford Royal Hospital

CASE STUDIES

Take a look around our towns and cities and you'll quickly see the impact of architectural façades on the urban landscape. They're found on the exterior of hotels, hospitals, universities, leisure centres and office blocks but are increasingly seen on multi-storey car parks. There's a very good reason for this... although architectural façades have some performance qualities, they give architects endless possibilities to transform seemingly standard products into bespoke, eye-catching (and often award-winning) designs. Here are some of Maple's best examples.



Greater Manchester Major Trauma Hospital, **Salford**

Maple completed the installation of a fin façade with anodised Regency Gold vertical fins that follow the building's curved profile. Some fins are attached directly to the hospital, while others are fixed to vertical posts that sit away from the hospital and connect to the building with carrier arms. To enable this vision, we used our Pluto rail system, typically for rooftop louvres, to create a unique substructure for the fins. The project involved 3D visualisation and close collaboration with DAY Architectural and BAM Construct UK.

"Maple's approach to collaboration was second to none and helped get over multiple hurdles throughout the construction stages of the projects. The Maple-finished installations are of high quality and BAM as a whole would not hesitate to recommend and use them again."

– Thomas Leach, Assistant Project Surveyor, BAM Construct UK

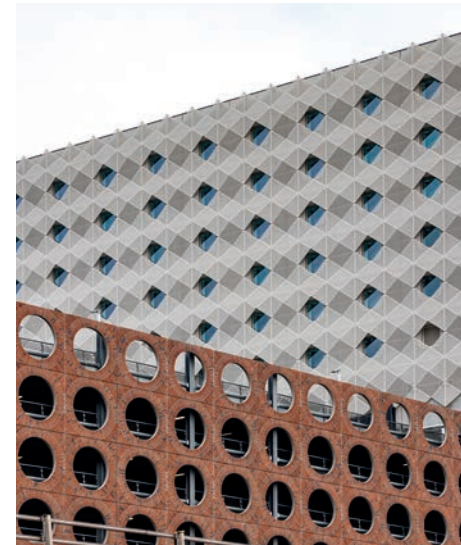


Grindley Hill MSCP, **Stoke-on-Trent**

University Hospitals of the North Midlands NHS Trust unveiled a new multi-storey car park with 1,680 spaces, including 84 designated for electric vehicles. Maple were responsible for the design, supply and installation of the architectural façade, which comprises 490 aluminium fins in organic colours of copper, green and silver. Additionally, silver expanded mesh features on all elevations, enhancing practicality by allowing natural light in and petrol fumes out.

"Maple were very professional, very well organised and good to work with. I'd happily recommend them again."

– Bruce Bagnall, Project Manager, Vinci Building UK



Premier Inn, Circle Square, **Manchester**

Folded aluminium panels in 3D diamond shapes cloak the top six floors of a Premier Inn in Manchester's Circle Square, forming a standout feature of the £750m development. Created through collaboration between Maple's design team, Leach Rhodes Walker and Russell WBHO, the panels were produced in Maple's factory, where full-size mock-ups refined the complex design. Despite its intricate look, the façade uses standard triangular, perforated panels, powder-coated in grey-white for visual impact and strength.

"The best thing I can say about the project is that it looks exactly the same in real life as it did on the original CGI."

– Senior Project Manager, Bruntwood

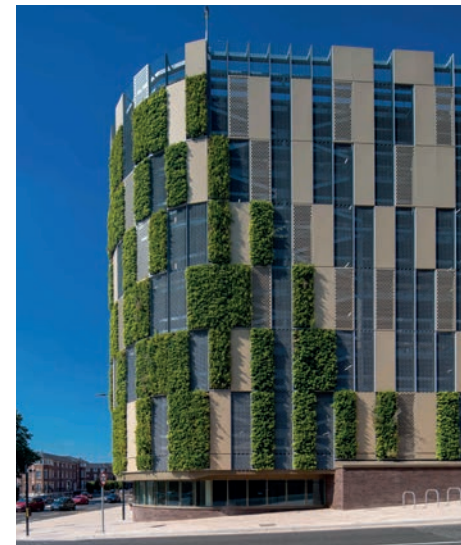


Kao Park Data Centre, **Harlow**

Vertical fins in various shades of yellow and green clad the exterior of the KLON-02 building, which is the second of four phases at the Kao Data Campus in Harlow. The exterior features Maple's Infiniti® fins to create a seamless, hidden-fix façade to screen the centre's extensive IT equipment. Maple also supplied and installed louvres on the data centre, providing ventilation for the building's HVAC locations.

"We had a very good experience and where we did have issues with the fins it was dealt with really well."

– Paul McGeady, Project Manager, JCA Engineering



Chester Northgate MSCP, **Chester**

Chester Northgate MSCP features perforated, solid, and expanded mesh panels in shades of grey, silver and gold. Maple fabricated and installed over 250 panels for the 800-space car park, which also includes electric car charging points and a cycle hub. The development also houses the new Chester Market, a cinema, bars, restaurants and office spaces.

"Design services from Maple were outstanding, as was the quality of the final product. Project support was also excellent."

– Michael Dunn, Associate Director, AHR



WHY MAPLE?

PASSION

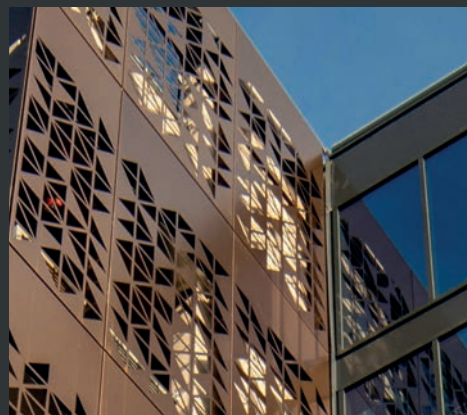
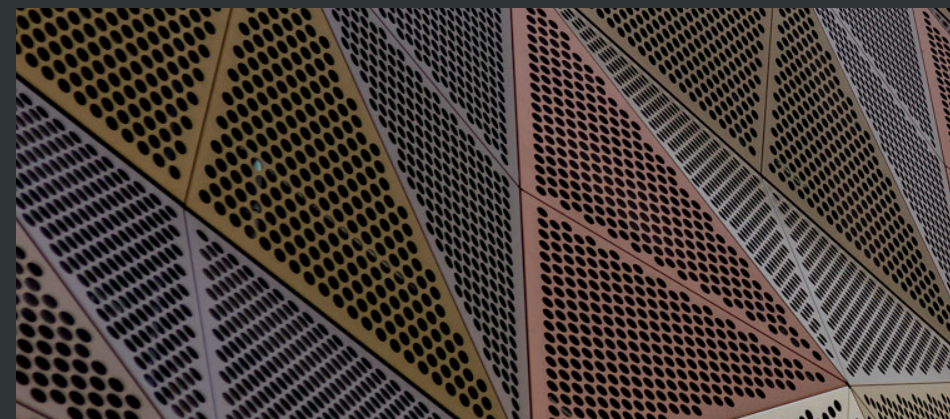
We care about your project as much as you do and will never leave a project until it is completed. We thrive on all customer feedback and are continuously striving for better solutions.



SUCCESS

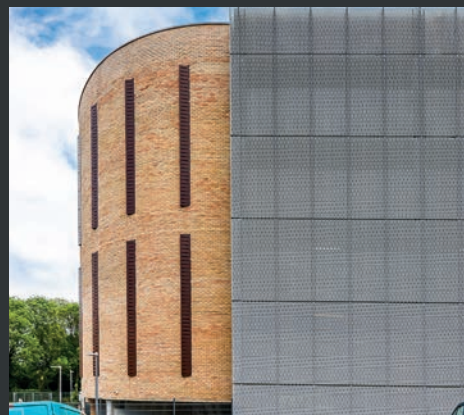
We ensure that your project's design intent is protected through early collaboration and our Proven Process helps to keep your project on track.

Maple are experts in aluminium façades and have been helping contractors, architects and client organisations across the UK deliver challenging architectural façade projects for the last four decades. We thrive on bringing visions to reality by combining design logic, technical know-how and thoughtful planning with superior products and exceptional service.



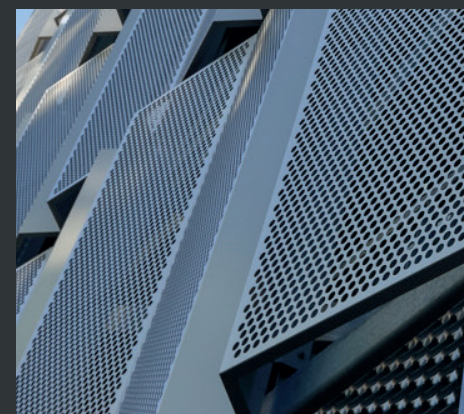
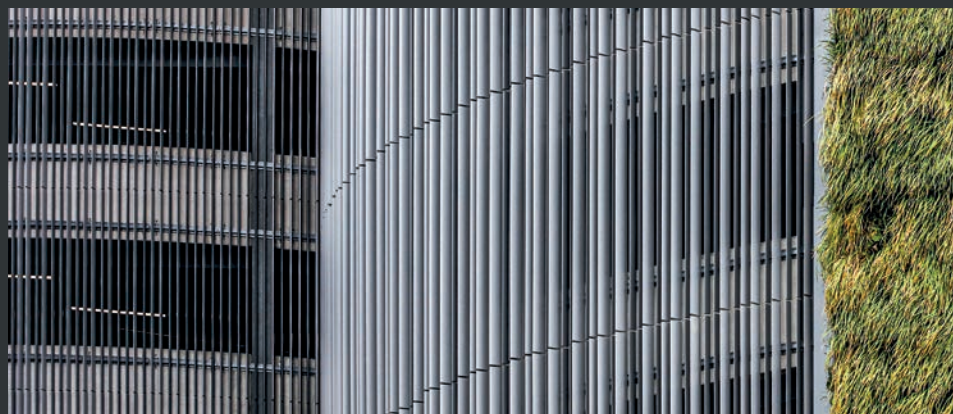
EXPERTISE

We're experts in the end-to-end process of an aluminium façade project from concept to completion.



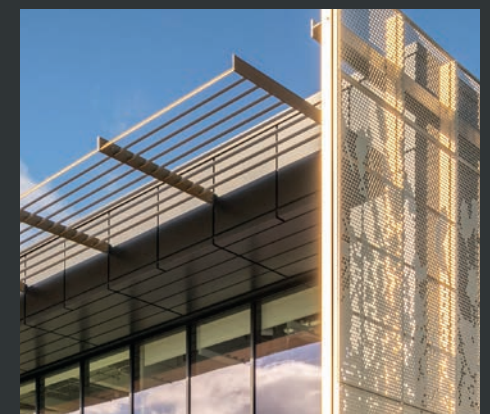
THE
MAPLE
WAY®

PROVEN
PROCESS



PROVEN PROCESS

Maple's Proven Process describes the 24 critical stages and in-depth methodology that support the five main building blocks of every successful project, and provide tangible benefits for clients – from inception to completion.



MAPLE

Maple is a leading designer, manufacturer and installer of rainscreen cladding, solar shading, weather protection and screening for building exteriors and interiors. Since 1983, we've been combining innovation, technical excellence and exceptional customer service to deliver projects that save energy, create visual impact and make buildings more comfortable for their occupants.



Maple Façades

Bramhall Moor Technology Park, Pepper Road, Hazel Grove, SK7 5SA

Call: **0161 456 6644**

Email: **sales@maplefacades.co.uk**

Visit: **maplefacades.co.uk**

 [/maplefacades](https://www.linkedin.com/company/maplefacades)